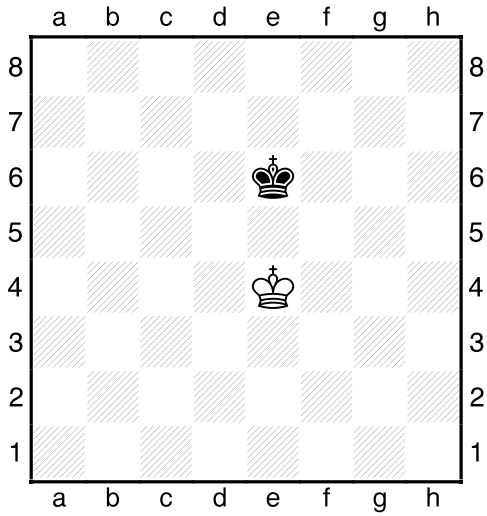


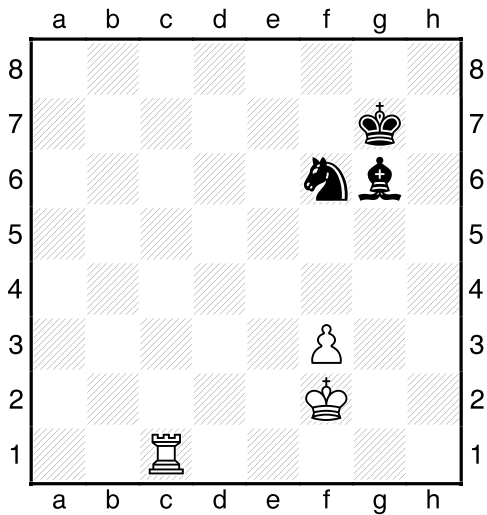
NAME _____

DATE _____



Q1.

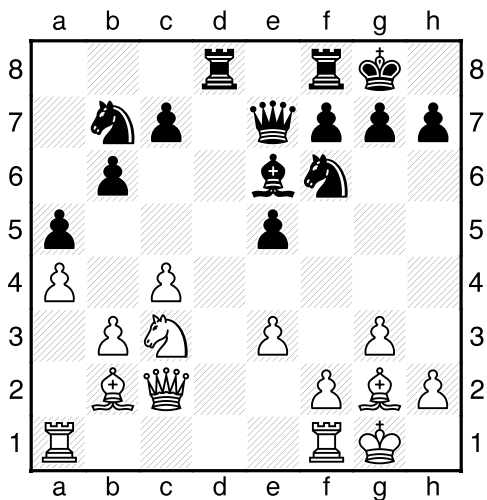
Write down the name of the square on which the WHITE KING stands.



Q2.

Who has more points?

- White
- Black
- Both the same

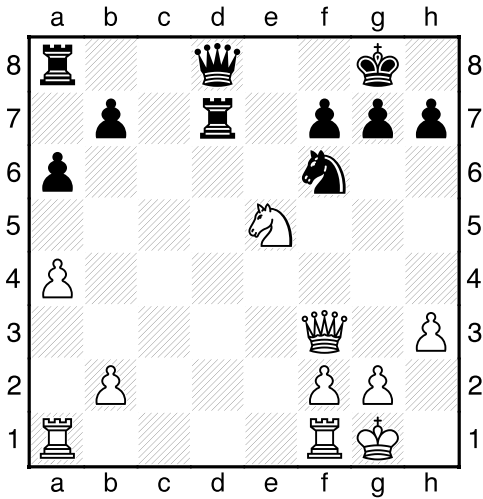


Q3.

It's White's move.

How can he capture an undefended piece?

Draw an arrow on the board to show the move or write your answer below.

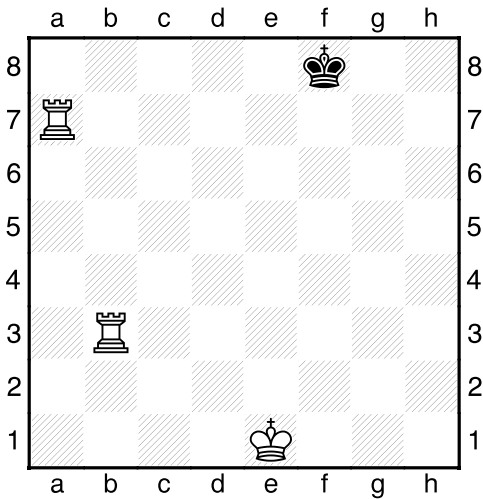


Q4.

It's White's move.

How can he capture a stronger piece with a weaker piece?

Draw an arrow on the board to show the move or write your answer below.

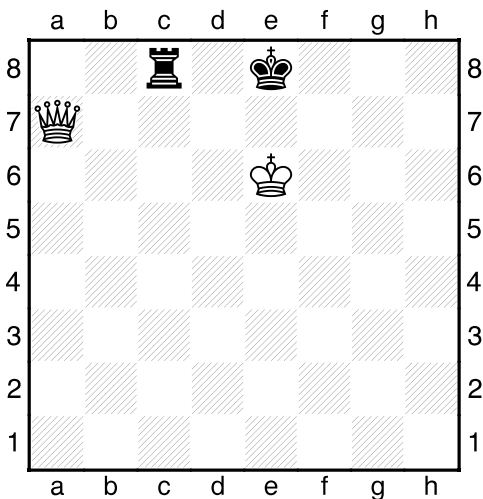


Q5.

It's White's move.

How can he get CHECKMATE this move?

Draw an arrow on the board to show the move or write your answer below.

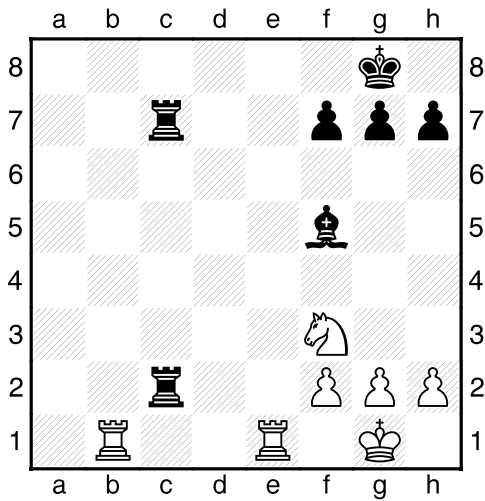


Q6.

It's White's move.

How can he get CHECKMATE this move?

Draw an arrow on the board to show the move or write your answer below.

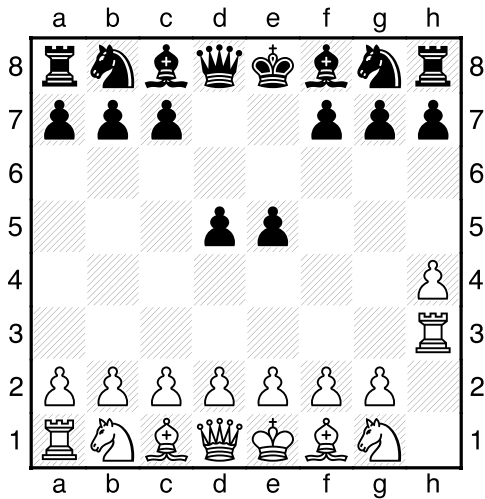


Q7.

It's White's move.

How can he get CHECKMATE this move?

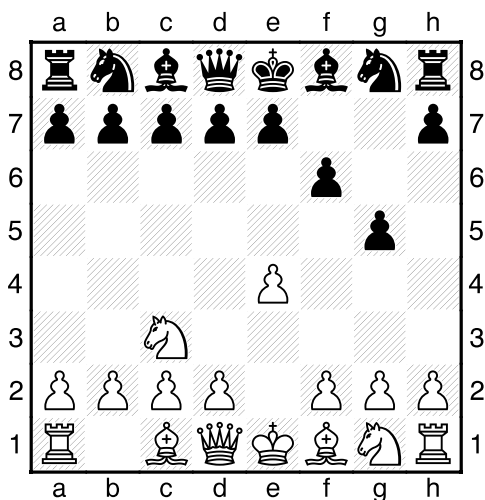
Draw an arrow on the board to show the move or write your answer below.



Q8.

Who's played the BEST moves so far in this game?

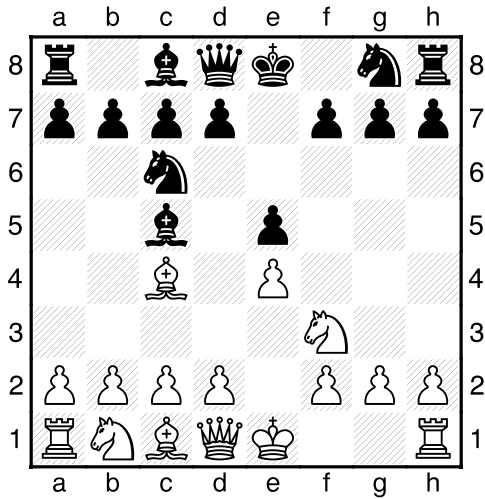
- White
- Black
- Both the same



Q9.

Who's played the BEST moves so far in this game?

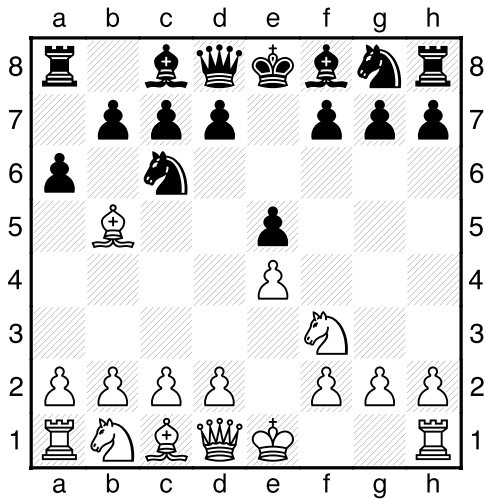
- White
- Black
- Both the same



Q10.

Who's played the BEST moves so far in this game?

- White
- Black
- Both the same

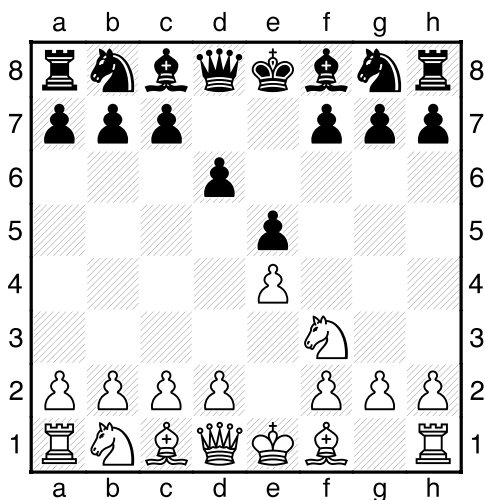


Q11.

It's White's move.

If he takes the Knight with his Bishop is it...

- A GOOD exchange
- An EQUAL exchange
- A BAD exchange

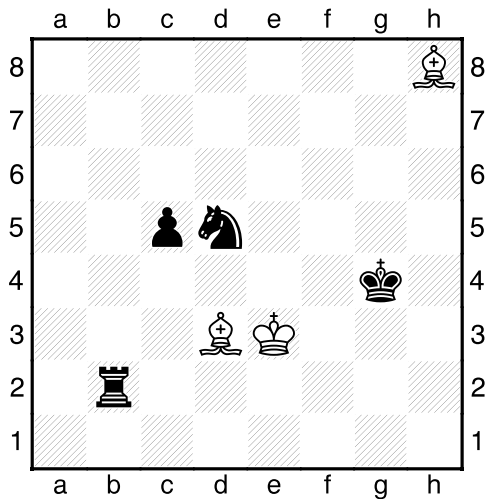


Q12.

It's White's move.

If he takes the Pawn with his Knight is it...

- A GOOD exchange
- An EQUAL exchange
- A BAD exchange

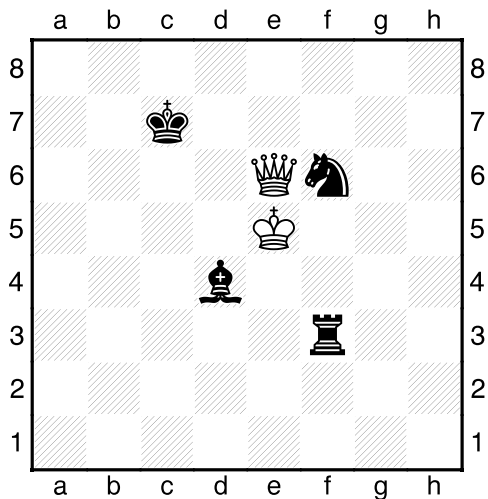


Q13.

It's White's move.

How can he get out of CHECK?

Draw an arrow on the board to show the move or write your answer below.

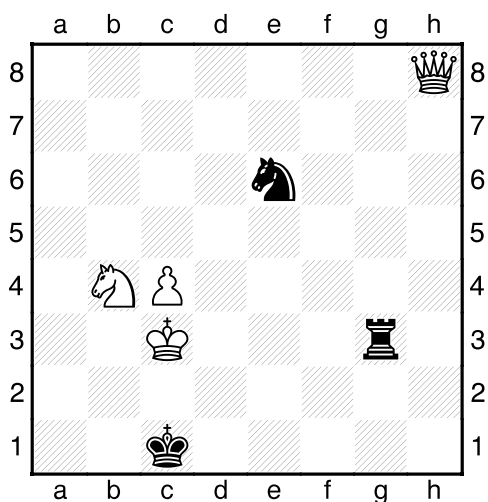


Q14.

It's White's move.

How can he get out of CHECK?

Draw an arrow on the board to show the move or write your answer below.



Q15.

It's White's move.

How can he get out of CHECK?

Draw an arrow on the board to show the move or write your answer below.
